

# PIPE-FLO® Overtime

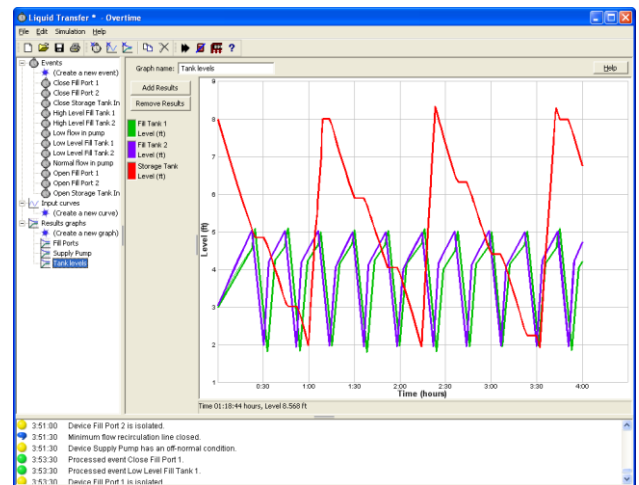
Gain a clear picture of your fluid piping systems with *Overtime*.

The Piping System Model, created by PIPE-FLO, shows great detail about the steady state operation of any piping system. However, for a dynamic look at a systems operation you need to wait until the system is built and put into operation. **That is until NOW!**

**PIPE-FLO Overtime**, Engineered Software's newest release and an add-on to PIPE-FLO Professional can quickly simulate how your piping system will operate over a specified period of time. Specifically, **Overtime** turns the static PIPE-FLO model into a dynamic problem solving simulation tool. Instead of analyzing your system at a moment in time, **Overtime** analyzes your system over a period of time. It's like the difference between a snapshot and a movie. Not sure how this could be put to use? Here a few examples of how the **PIPE-FLO Overtime** program can be utilized:

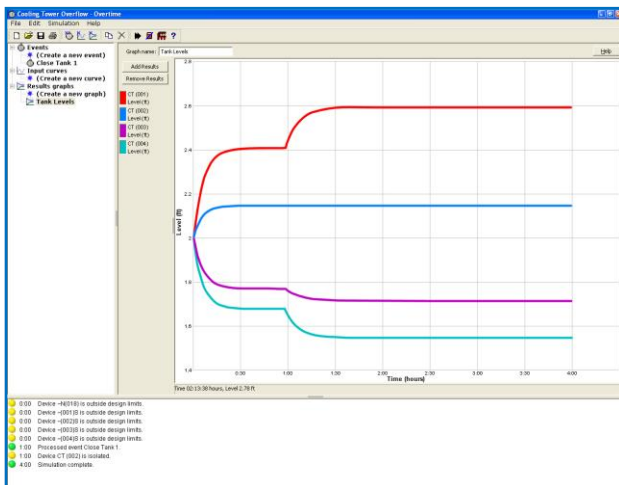
- **Prevent the overflowing of cooling towers** by determining the balanced levels in each cooling tower basin
- **Determine the number of pump starts per hour** for a waste collection system under any expected operating condition
- See how your system will operate by **testing the equipment logic** prior to programming your Programmable Logic Controller
- Perform a **process safety management analysis** of the piping system by analyzing the system with various failed components

With **PIPE-FLO Overtime** you can create dynamic events using the intuitive events editor. Simply choose a system component from the list, then describe what you want to have happen when a specified condition occurs. After creating the events, run the simulation and see how the system operates under the given set of conditions.



For example, to see how quickly a tank pumps down, simply create a high tank level and low tank level using the events editor and then run the simulation. **Overtime** directs PIPE-FLO Professional to simulate how the system operates for each interval of time, and displays the results in an event log. Once the simulation is complete, use the playback controls to run the calculations and get a detailed look at what is happening within the piping system during each time interval. Pause, fast forward and rewind the simulation, just like a DVR – with your mouse acting as the remote control!

Complete documentation is available by printing the events log, graphing the results, or calling up any time interval in the simulation and printing a PIPE-FLO report. The report can be sent to any Windows supported printer or plotter, or e-mailed as a PDF document.



**PIPE-FLO Overtime** uses the same Piping System Model created by the PIPE-FLO Professional program. In addition, **Overtime** uses PIPE-FLO Professional's calculation engine to perform the detailed system analysis. Not only is the calculation engine fast – performing over 1,000 calculations per second – but it is extremely accurate. This combination provides you with a clear picture of how the system operates over time, saving you time and money.

PIPE-FLO Professional provides you with a clear picture of your fluid piping system. **PIPE-FLO Overtime** turns that picture into an interactive problem solving movie. All you need to do is supply the popcorn!

For more information about **PIPE-FLO Overtime**, visit our website at [www.eng-software.com](http://www.eng-software.com) and view the **Overtime Product Tour** or call 800-786-8545.