

Some of the largest and most recognized pump companies in the world use PUMP-FLO™ Solutions' products, including:

Aurora Pump, Gorman-Rupp Co., Goulds Pumps, Fairbanks Morse Pump, Dean Pump, Fybroc, Wilden Pumps, Sulzer Pumps, Peerless Pump, Crane Pumps & Systems, and Patterson Pumps just to name a few.

PUMP-FLO Solutions' products and services help optimize your business processes and increase your sales and revenue. Currently PUMP-FLO Solutions has more than 100 manufacturers, 400 distributors, and 250,000 pump buyers/users actively using the software.

Founded in 1982, PUMP-FLO Solutions (An Engineered Software Business) is the leading provider of Windows and Web-based software solutions for the fluid handling industry. From the beginning, PUMP-FLO Solutions has been at the forefront of leadership and technology innovation. The result is our industry standard PUMP-FLO software platform for streamlining the pump sizing, selection, quotation, pricing and configuration process.

PUMP-FLO Enterprise

ePUMP-FLO

PUMP-FLO

PUMP-FLO.com



PUMP-FLO™ Solutions
An Engineered Software Business

Pump Selection & Analysis

Creating Quotations

Pricing & Configuration

Lead Generation

Order Processing

And Much More . . .

Streamline Your Business Processes

Simplify product sizing, selection, pricing and configuration, quotations and proposal generation.

Increase Your Productivity

Give your reps and distributors the tools they need to size and select pumps and send detailed RFQ's to your sales offices.

Reduce Sales Cycles By 30-40%

Automate the pricing configuration, quotation, and proposal process.

Standardize Your System

Put reps and distributors on one easy to use system, so everyone is on the same page.

Discover New Sources of Revenue and Profitability

Use advanced lead generation and management tools.

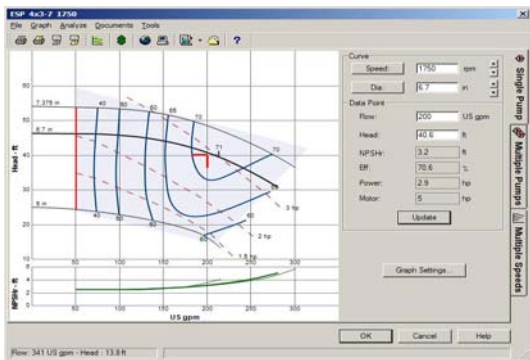
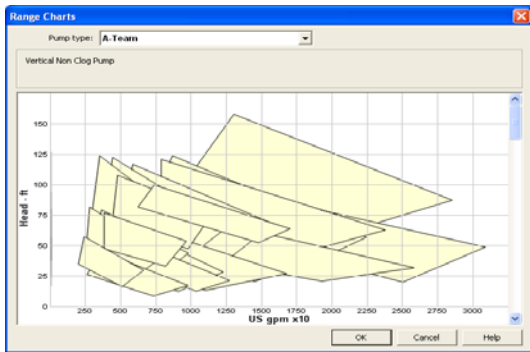
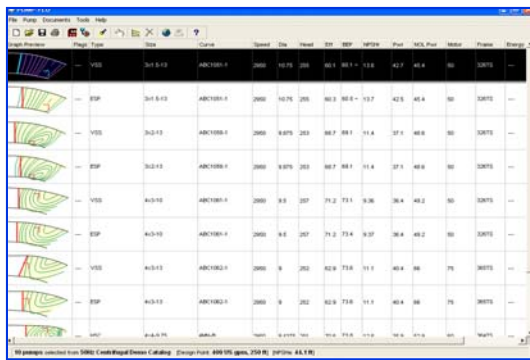
Reduce Costs

Eliminate the need for printing and distributing paper catalogs and price books.

Add Value

Differentiate your company and product line from the competition.

SEE WHAT PUMP-FLO LOOKS LIKE



PUMP-FLO ENTERPRISE FEATURES

FEATURE	DETAILS
Design Point Calculator	The PUMP-FLO Enterprise Total Head Calculator module is a powerful tool for users who don't previously know their system design point. Using the THC users can calculate the total head for the system at the required flow rate. The user inputs the suction and discharge piping parameters including tank conditions, pipe length, pipe material and sizes valves & fittings. Using the desired flow rate, PUMP-FLO calculates the total head for the system.
Pump Selector	Powering the PUMP-FLO Enterprise Pump Selector is the industry standard PUMP-FLO program. This technology is far superior to any program on the market today based on its ease of use, speed of calculation and overall features and functionality. The PUMP-FLO Enterprise Pump Selector is a powerful software platform for users of all levels to make an intelligent pump selection.
Lead Generation & Management	With PUMP-FLO's Enterprise Lead Generation module you have access to all the customer lead information that's stored in a secured database. The lead information includes demographic information as well as details about user pump selection. In addition, PUMP-FLO Enterprise gives your customers and distributors the tools to send you a Request for Quotation (RFQ) with detailed contact information and datasheet reports of the selected pump.
Pricing Configuration	Sorting through complicated price books, product options, and discount structures is a very long and tedious process, not to mention the high probability for mistakes. Companies must create a standard practice to allow reps and distributors to quickly and easily price and configure products and spare parts. Using the PUMP-FLO Enterprise Configurator you can offer a powerful, easy to use software program to streamline the entire sales process.
Quotation / Proposal Generation	Once a product has been properly size and selected, it is important that your sales team and distributors have the tools to organize the additional documentation such as dimensional and cross sectional drawing, installation instructions, maintenance manuals, etc. The PUMP-FLO Enterprise Quotation / Proposal module allows users to easily organize these important documents in order to generate an official proposal.

PUMP-FLO'S PROFESSIONAL SERVICES

SERVICE		FOR MORE INFO
Technical Consulting & Implementation	Our Project Managers and Technical Professionals will draw upon their experience to ensure a complete and successful implementation of the PUMP-FLO software.	info@pump-flo.com or 800-876-8545
Training & Education Services	In providing our customers with the highest level of knowledge of our products, PUMP-FLO Solutions offers a Training service to meet your needs, ranging from a short online conference presentation to an onsite multi-day training course.	training@pump-flo.com or 800-876-8545
Technical Support Services	Our team of technical and engineering support professionals are ready to answer any technical questions and prepared to solve any new issues that your company may encounter, available by phone, fax, e-mail.	solutions@pump-flo.com or 800-876-8545
Custom Software Development Services	To suit your specific needs PUMP-FLO Solutions offers a custom software development service ranging from developing new software modules, features, or interfacing with third party software.	sales@pump-flo.com or 800-876-8545
Marketing & Advertising Services	We have a number of services including banner ads, eNewsletters, and direct mail campaigns targeting over 250,000 professionals in the fluid handling industry. In addition, we offer powerful lead generation and management tools.	sales@pump-flo.com or 800-876-8545
Catalog Creation & Management Services	We have developed an advanced and refined system to migrate pump performance data, data sheets, pump materials reports, pump installation instructions, dimensional drawings, and any additional documentation into an electronic format or eCatalog.	catalogs@pump-flo.com or 800-876-8545